



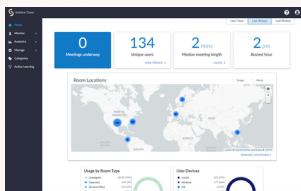
Solstice

GETTING STARTED GUIDE



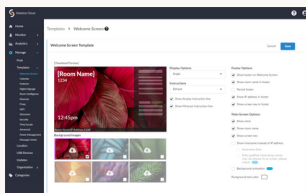
What is Solstice?

Solstice is wireless presentation hardware that focuses on collaborative function between multiple users via devices such as laptops, phones, or tablets. It is available in most ECAS classrooms.



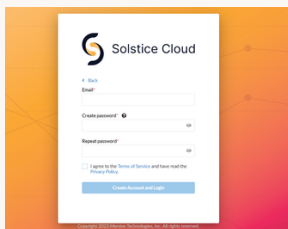
Features

- Wireless content sharing
- Group collaboration via multiple shared displays
- Moderation mode for selective viewing by a moderator
- Desktop/Mobile app support for ease of connection



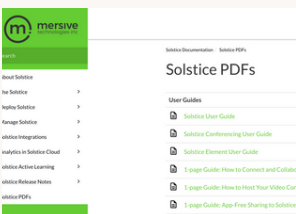
Uses

- Display of static media (e.g., PowerPoints, images)
- Digital whiteboard
- Display of video and audio media
- Comparative viewing with multiple users/devices
- Moderating users presenting in group presentations



Where Can I Access Solstice?

- Installed 145 "pods" installed in Emory College Registrar and Meeting Rooms
- Mersive Solstice has an app for iOS, Android, Windows, and MacOS. It can be connected to via web browser by using its displayed IP address.



Resources and Tech Support

- Documentation.Mersive.com has a useful section called "Use Solstice" with helpful texts and videos
- College.Emory.edu/cts has guides on using Solstice within ECAS classrooms

For tech support: Contact the [Classroom Technologies Team](#) - echelp@emory.edu